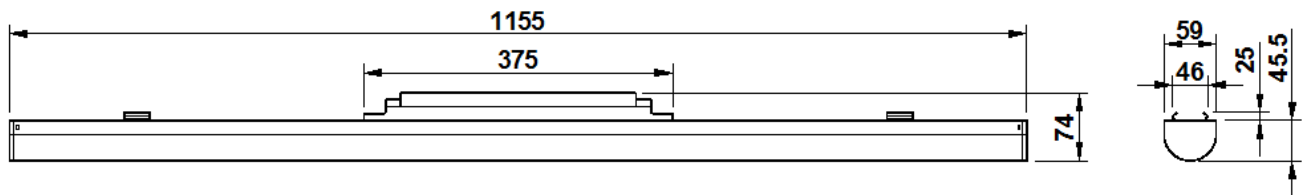
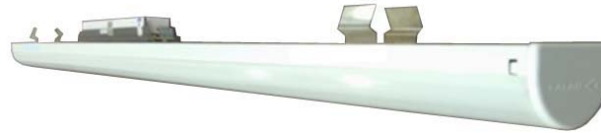




## RETAIL LIGHTING "Viva Trunking System"

BLTRU 40W VIVA TMV NW / WW / WH



NOMINAL DIMENSIONS IN mm Tolerance +/-5

### Application

- Passage, corridor lighting (ESP. IT, ITES)
- Shopping malls,
- Hospitality industry

### Specification

- CRCA steel sheet housing comprising of Neutral White (NW) / Warm White (WW) / White (WH) LED's connected in series parallel.
- Opal diffuser is supported by a pair of Engg. Plastic end plates which facilitate easy removal for maintenance.
- Luminaire housing has specially designed push-fit mechanism for mounting on trunk system.
- Driver: Constant current output driver, operating range 150 – 275V AC supply voltages. Fixed on luminaire externally.
- Finish: White powder coated (RAL 9016)
- The luminaire is suitable for trunking system mounting.
- Suitable with trunking system : BLTRU 45 MS W/O Suspension (220272)

### Electrical Data

Product Code	Cat. Ref.	System Wattage (W)	Nominal Voltage (V)	Mains Current in Amps. At 240 V	Power Factor
112256	BLTRU 40W VIVA TMV NW	40W	240	0.175	0.95
112257	BLTRU 40W VIVA TMV WW	40W	240	0.175	0.95
112258	BLTRU 40W VIVA TMV WH	40W	240	0.175	0.95

Data subject to variation due to change/improvement in the design, materials and processes.

<p><b>BAJAJ LUMINAIRES</b> Making the difference</p>	DRAWN	KPM	30-04-2015	FOR –
	CHECKED	SP		REV - 2 DATE-30-09-2015
	APPROVED	DVRS		DRG.No
	DATA SHEET RELEASED ON DT-			<b>BLTRU 40W VIVA TMV NW-01</b>
BAJAJ ELECTRICALS LIMITED 15/17, SANT SAVTA MARG, REAY ROAD, MUMBAI-400 010.				* E-mail : <a href="mailto:luminaires@bajajelectricals.com">luminaires@bajajelectricals.com</a>