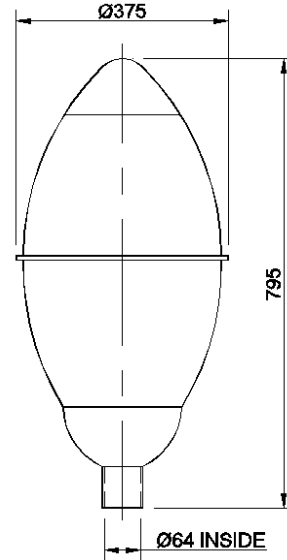




COSMOS

BGCS 40W LED

BGCS 70W LED



Features

- Parks and gardens
- Entrance gates
- Pathways
- Residential colonies
- Security lighting, etc

Applications

- Fully weather proof
- New generation accessories
- Easy to install and maintain
- Degree of protection: IP 65

Specification

- Spun aluminium graphite grey dust powder coated finished canopy.
- Cast aluminium spigot housing.
- Opal acrylic diffuser is provided.
- Low power LEDs connected in series and parallel combination with better heat dissipation arrangement.
- Luminaire is available with color temperature: White (WH) : 5700K
- Highly efficient constant current electronic driver having operating voltage range from 140-280 Volt AC; provided with high voltage, open and short circuit protection.
- Suitable for 60mm OD pipe entry with fixing bolts.

Electrical Data

Product Code	Cat. Ref.	System Wattage (W)	Nominal Voltage (Vac)	Mains Current In Milli Amps. At 240V AC	Power Factor
111536	BGCS 40W LED	40W	240	150	0.95
111537	BGCS 70W LED	70W	240	300	0.95

Data subject to variation due to change/improvement in the design, materials and processes.

<p>BAJAJ LUMINAIRES Making the difference</p>	DRAWN	KPM	16-08-2013	FOR –
	CHECKED	RN		REV - 0 DATE-05-10-2013
	APPROVED	DVRS		DRG. No
	DATA SHEET RELEASED ON DT-			BGCS 40/70W LED - 001