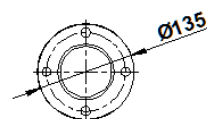
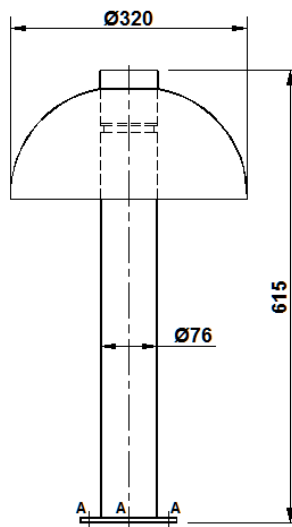




LANDSCAPE LIGHTING
"MUSHRUMZ"

BLBMC 9W WW LED

Mushroom shaped, integral decorative LED bollard with clear acrylic



A = 4 NOS. Ø12 HOLES ON 105 PCD

Dimensions in mm Tolerance +/-5

Application

Precinct and promenade lighting, security lighting of commercial and residential blocks, etc

Specification

- Mushroom bollard luminaire is made in 3 parts comprising of
 1. Spun aluminium, white powder coated inside mushroom shaped top cover.
 2. Cylindrical clear acrylic.
 3. Seamless GI pipe bottom housing the control gear for 9W LEDs.
- Luminaire is available with color temperature: Warm White (WW): 3000°K ±250°K
- Maintenance done by removing aluminium die-cast housing.
- Luminaire is provided with a base plate and fixing holes for directly mounting on the concrete pedestal.
- Finish: Graphite grey powder coated.
- Degree of protection: IP65

Electrical Data

Product Code	Cat. Ref.	Total System Wattage (W)	Nominal Voltage (V)	Mains Current in Amps. at 240 V	Power Factor
111740	BLBMC 9W WW LED	9W	240	0.05	≥ 0.95

Data subject to variation due to change/improvement in the design, materials and processes.

<p>BAJAJ LUMINAIRES Making the difference</p>	DRAWN	KPM	07-02-2014	FOR -
	CHECKED	RN		REV - 1 DATE-05-03-2015
	APPROVED	DVRS		DRG.No
	DATA SHEET RELEASED ON DT-			BLBMC 9W WW LED - 001
BAJAJ ELECTRICALS LIMITED 15/17, SANT SAVTA MARG, REAY ROAD, MUMBAI-400 010.				* E-mail : luminaires@bajajelectricals.com