

LIGHTING UP AREAS WITH EXCELLENCE

EXPLORE AREA LIGHTING
SOLUTIONS THAT ARE BACKED
BY YEARS OF EXPERTISE.

AREA LIGHTING CATALOGUE

“ WE ILLUMINATE NATIONS ”

The last few decades have witnessed a rapid acceleration of globalisation, mainly due to a growth in international trade and an increase in the use of smart technology. This has led to growing urbanisation and digitalisation, particularly in developing countries.

To fulfil the demands arising out of accelerated globalisation and its effects, Bajaj Electricals Limited has expanded its horizon, through a host of smart indoor and connected outdoor solutions. These solutions are catalysts driving change within urban communities. Furthermore, Bajaj Electricals aims to provide technologically advanced IoT-enabled smart solutions to consumers, to help create sustainable living spaces for them.

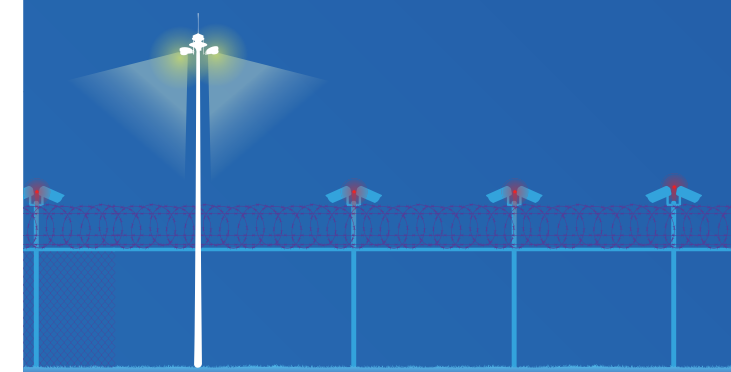
We offer a range of lighting solutions such as Smart Poles, Sports Lighting, Architectural Lighting and Solar Lighting. Besides this, we also provide lighting solutions for commercial premises, industrial spaces (i.e. Healthcare, Automotive, Steel and Power Industry), IBMS solutions and holistic solutions to create energy-efficient buildings and smart cities.

We strive to provide a one-stop shop solution to our customers, with the help of a complete on-ground support system as well as digital platforms like cloud-based connectivity and wireless solutions. This will enhance productivity and make it easier to create sustainable and smart infrastructure.

The diverse range of solutions we are aiming to provide, demonstrates our ambition to reach out to, enrich and illuminate millions of lives, cities and nations across the world.



**SMART INDOORS &
CONNECTED OUTDOORS**



“CUSTOMER PERCEPTION”



“Q1”

In today's world, when it comes to purchasing lighting solutions for upgrade or greenfield projects, consumers consider price as the most important factor. Along with this, quick delivery and a long warranty period satisfy the consumer. However, essential aspects such as quality, longevity, reliability, cost of spares, maintenance cost and the reputation of the brand are often ignored, leading to discomfort in the future.

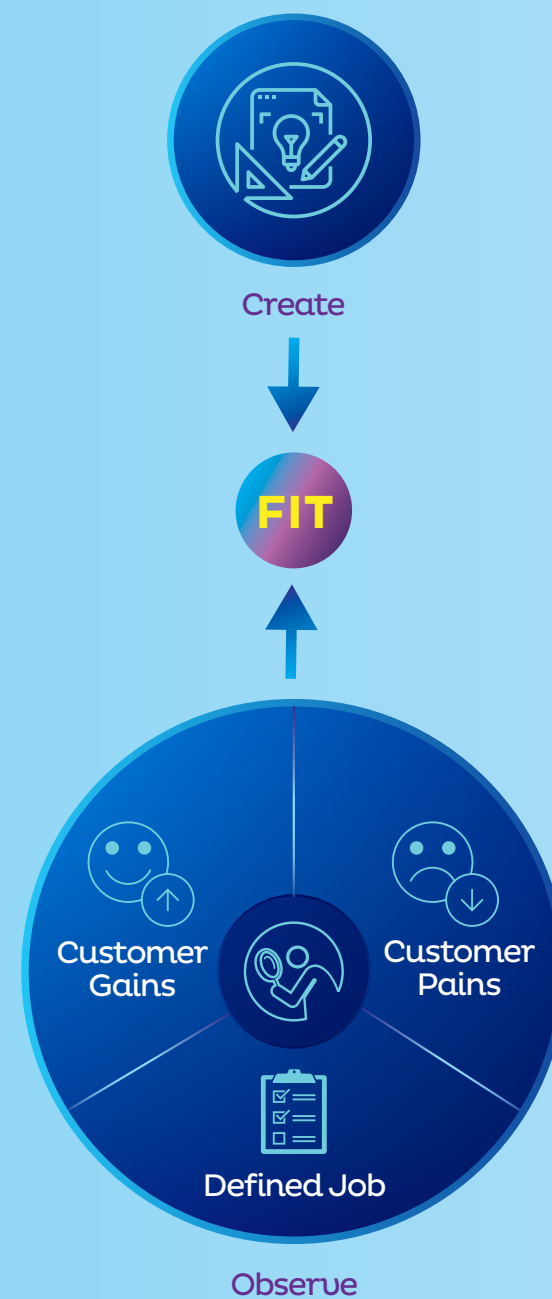
At Bajaj Electricals, we understand the need of the hour and provide innovative and smart lighting solutions to cater to customer requirements in order to change their perspective towards long lasting quality, reliability and cost of ownership.

Quality One (Q1) has always been our motto and 'Inspiring Trust' is our ideology. Keeping this in mind, we deliver only the best quality products and solutions.





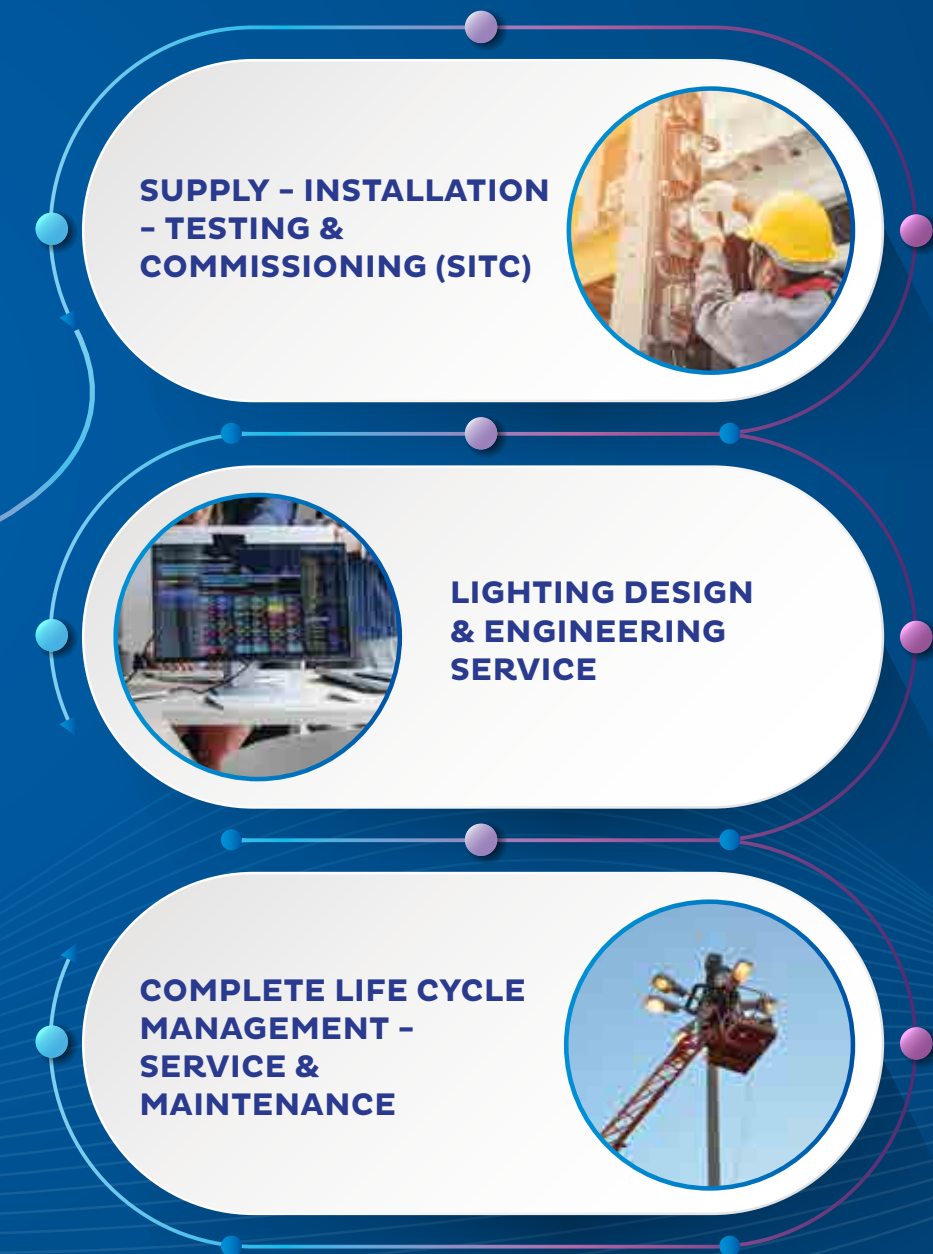
OUR PERSPECTIVE ON CATEGORISING EVERY NEED OF OUR CUSTOMER



ADOPTING THE Q1 MOTTO HELPS CONVERT CONSUMER PAINS TO CONSUMER GAINS



BAJAJ ILLUMINATION – CONCEPT TO CARE



“OUR STATE-OF-THE-ART MANUFACTURING FACILITIES”

Our certifications and futuristic manufacturing facilities are a testament to our commitment to developing products of the highest standard. Each product is carefully crafted to set benchmarks in the industry and deliver a high level of performance.



“LEED CERTIFIED R&D CENTRE”



NABL ACCREDITED PHOTOMETRIC LABORATORY



OUR FUTURISTIC R&D CENTRE AB SQUARE



“ ALWAYS AT YOUR SERVICE ”

Our highly trained service engineers ensure you have a hassle-free experience. Our spare parts are also available at over 20 Bajaj Electricals warehouses across India, while the 24x7 service registration facility through the mobile app and dealer extranet gives more power in your hands.

 **022-4128 1111** 10:00 AM to 7:00 PM (MON - SAT)

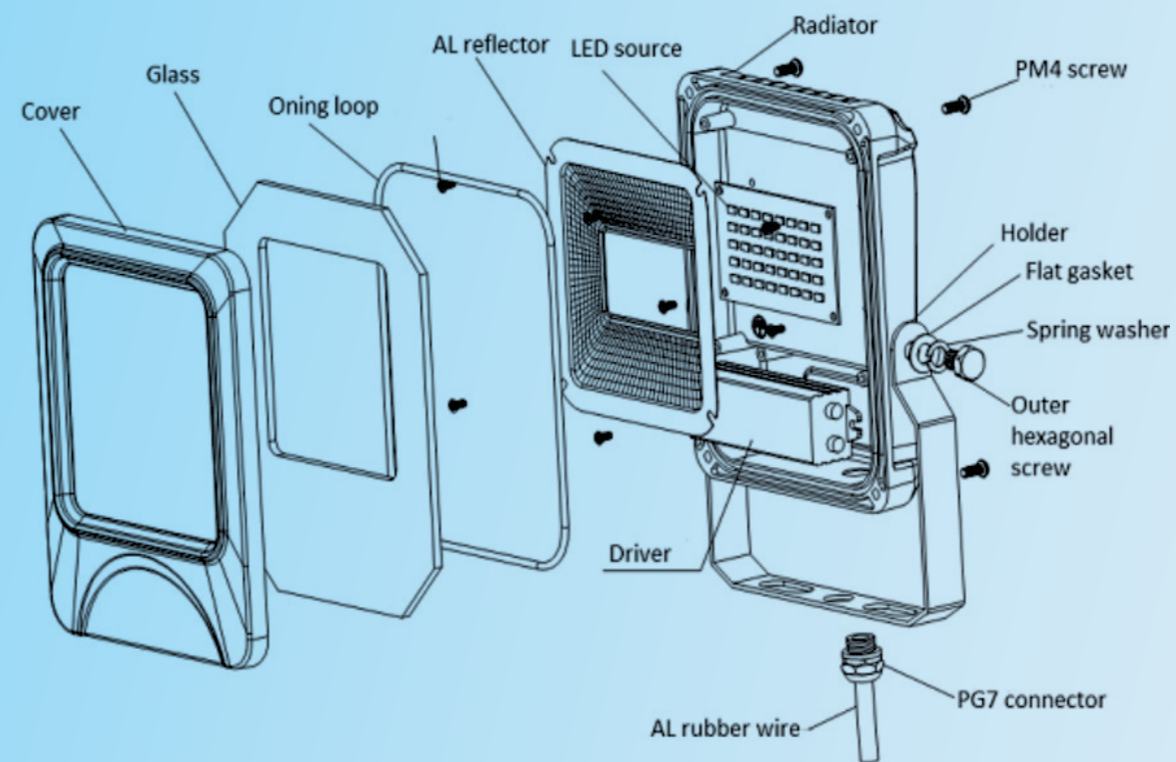


“ STACKED FOR GREATER EFFICIENCY ”

The systematic storage facility at our warehouse enables us to use space optimally and ensures that the stock is easily accessible when needed. It creates an efficient working environment and eliminates any bottlenecks in the flow of the stock.



“ TYPICAL FLOODLIGHT DETAILING ”



THE BAJAJ ADVANTAGE: TOTAL TURNKEY SOLUTIONS



Expert Advice

From initial ideas to detailed plans, we are able to provide consultancy as part of our package.



Design Expertise

The Bajaj in-house design experts provide both lighting and structural engineering designs.



Manufacturing Proficiency

Our manufacturing plants in Pune ensure that we achieve the most exacting standards.



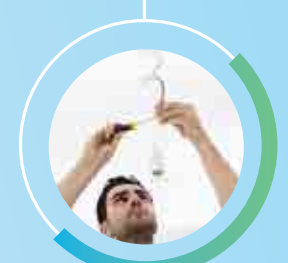
Ease of Installation

Our on-site ABACUS teams ensure safe and reliable installations, on time, every time.



Ease of Maintenance

Our maintenance engineer ensures the product is well maintained and delivers long-term performance.



Cost of Ownership

We safeguard your investment and ensure long-term performance.

“IGNITING THE GRANDEST STAGES”

At Bajaj Electricals, we have created floodlights that cover the maximum expanse and provide adequate illumination for perfect moments. Unlike spotlights that merely provide focused illumination, these provide the ultimate lighting experience, flooding the area of your choice with light.

CHOOSE BAJAJ LED FLOOD LIGHTING FOR YOUR NEEDS
AND REQUIREMENTS & AVAIL A WORLD OF ADVANTAGES:



10 TIMES MORE LIFE
THAN STANDARD LAMPS



60% HIGHER
ENERGY SAVINGS



REDUCTION OF HAZARDOUS
ECO-WASTE WITH FEWER
LAMP REPLACEMENTS



BIS COMPLIANCE



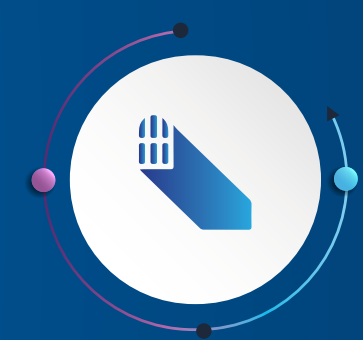
MUCH LOWER
HEAT EMISSION



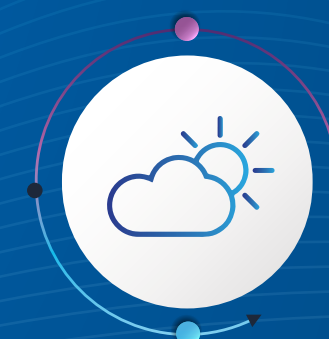
LOW COST OF REPLACEMENT
& MAINTENANCE



REDUCED RISK
OF ELECTRIC
ACCIDENTS OR FIRE



RECREATES DAYLIGHT
FOR OPTIMUM
PRODUCTIVITY



IMMUNE TO WEATHER
& TEMPERATURE CHANGES



ENVIRONMENT
FRIENDLY

OPTICAL PROTECTION

LIGHT ENGINE

LED TYPE: Discrete

For better light distribution & higher efficacy

SECONDARY LENS OPTICS: Modular

For uniform distribution, aesthetic looks, glare-free light & speeding the production process.

DIFFUSER TYPE: Polycarbonate (PC)

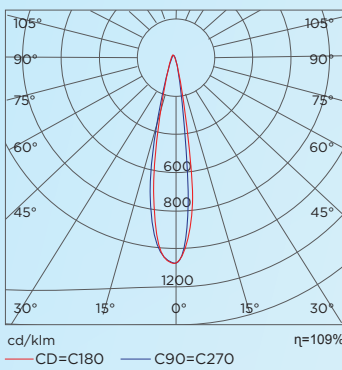
Longer durability & withstands higher temperature

MCPCB:

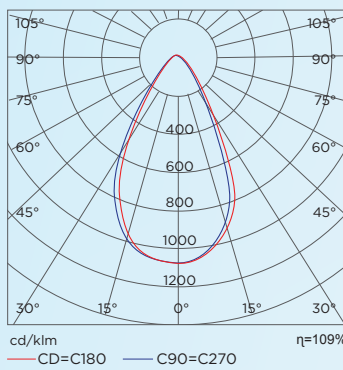
For better thermal management & enhance LED life

THERMAL INTERFACE MATERIAL: Reputed Make

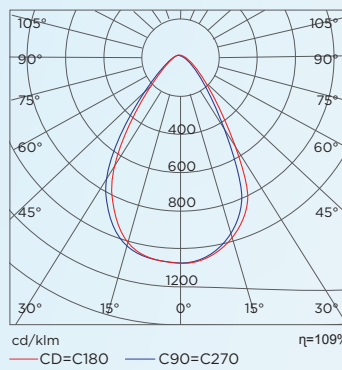
Improved heat dissipation for increasing the life of the LED



Narrow Beam



Medium Beam



Wide Beam

ELECTRICAL PROTECTION

SURGE PROTECTION:

Additional $\geq 10\text{kV}$ external surge protection provided

OTHER PROTECTION:

Internal 5kV surge, open load, short circuit & reverse polarity protection



THERMAL MANAGEMENT

HOUSING TYPE:

PDC aluminium housing - with fins

DRIVER TYPE:

Constant current isolated driver - Wide operating voltage range, high voltage protection & output short circuit in no load condition



EARTHING:

Dedicated earth wire provided

MECHANICAL / DIMENSIONAL PROPERTIES

INGRESS PROTECTION LEVEL:

IP 65/66

MOUNTING ARRANGEMENT:

Cradel type

NON-INTEGRAL:

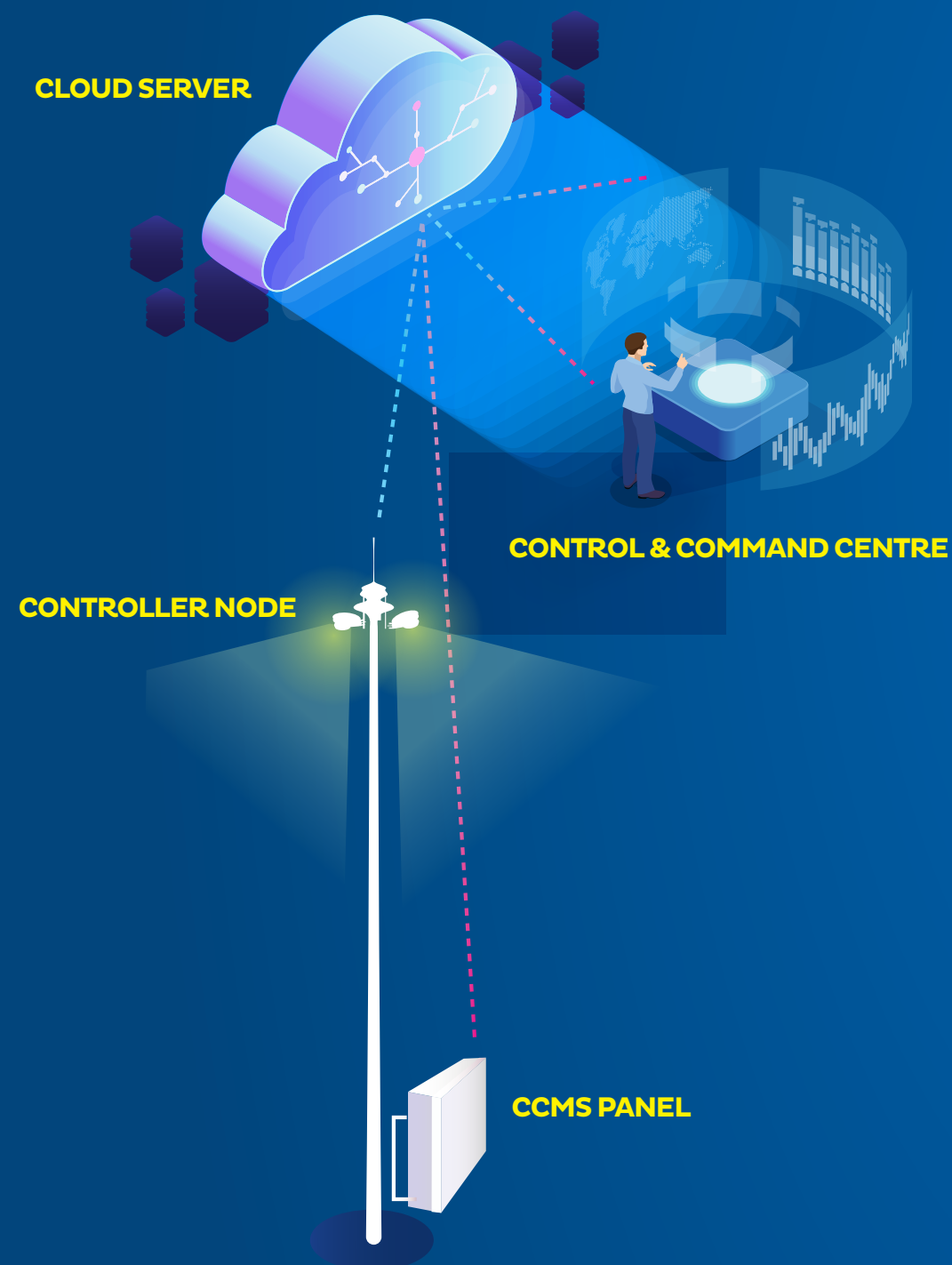
Maintenance-friendly

IMPACT RESISTANCE:

IK08



“ SMART OPTIONS ”



Remote On-off



Remote Dimming for Power Savings



With Colour Changing/ Tunability Option



“

SPORTS & STADIUM LIGHTS THAT MAKE THE ACTION COME ALIVE

”

Lighting levels for outdoor sports lighting are considerably lower than daylight levels and usually lower for the same sport played indoors. This is because there is usually a greater subject contrast outdoors due to the dark sky backdrop, thus providing good adaptation levels. Illuminance levels are dependent upon the difficulty of the visual task.



YOU NEED TO KNOW:

Guide to Sports Lighting Levels

Artificial Lighting in Sports:

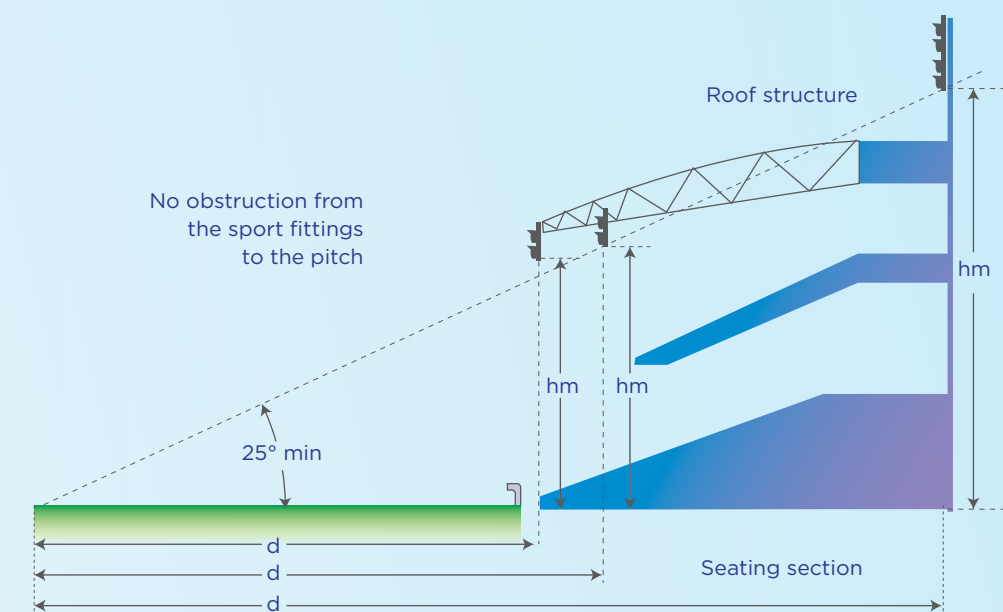
The primary goal of the event lighting system is to illuminate the event to digital video quality for the media without creating nuisance glare for the players/officials and adding spill light/glare to the spectators and surrounding environment. Permanent lighting, temporary lighting and a combination of both systems should be considered.

Special care should be taken to limit the spill light and glare off the field, both inside and outside the stadium. The players and officials must be able to perform to their fullest ability within an illuminated environment that enhances play. The principal goal of the lighting system is to ensure symmetrical lighting for both touch line and goal line conditions. Both fixed and field cameras can be added without affecting the digital video quality.

Mounting Height of Luminaire

(For Football stadium as per FIFA guidelines):

The mounting height of the light fittings is critical to the success of the sports lighting system. The mounting height geometry for sideline head frames and poles is 25° above the horizon, starting from the middle of the pitch and looking back towards the stadium seating bowl. The head frame and light structure may exceed this 25° minimum guideline but it should not exceed 45° .





Summary of Lighting Specifications for Football Televised Events

The following table is a summary of the criteria to be considered for televised events. It sets out the recommendations for vertical and horizontal illuminance, uniformity and the colour properties of lamps for each class of activity.

		Vertical Illuminance			Horizontal Illuminance			Properties of Lamps	
		Ev Cam Ave	Uniformity		Ev Cam Ave	Uniformity		Colour Temperature K (Kelvin)	Colour Rendering Index
Class	Calculation towards	lux	U1	U2	lux	U1	U2	Tk	Ra
Class International	Fixed Cameras	2,400	0.5	0.70	3,500	0.6	0.8	>4,000	≥65
	Field Cameras (at pitch level)	1,800	0.4	0.65					
Class International	Fixed Cameras	2,000	0.5	0.65	2,500	0.6	0.8	>4,000	≥65
	Field Cameras (at pitch level)	1,400	0.35	0.60					

Notes:

- Vertical illuminance refers to illuminance towards a fixed or field camera position.
- Vertical illuminance uniformity for field cameras can be evaluated on a camera-by-camera basis and variation from this standard will be considered.
- In all classes, the glare rating is $GR \leq 50$ for players on the pitch within the player primary view angle. The glare rating is appropriate when the player view angles are met.



“

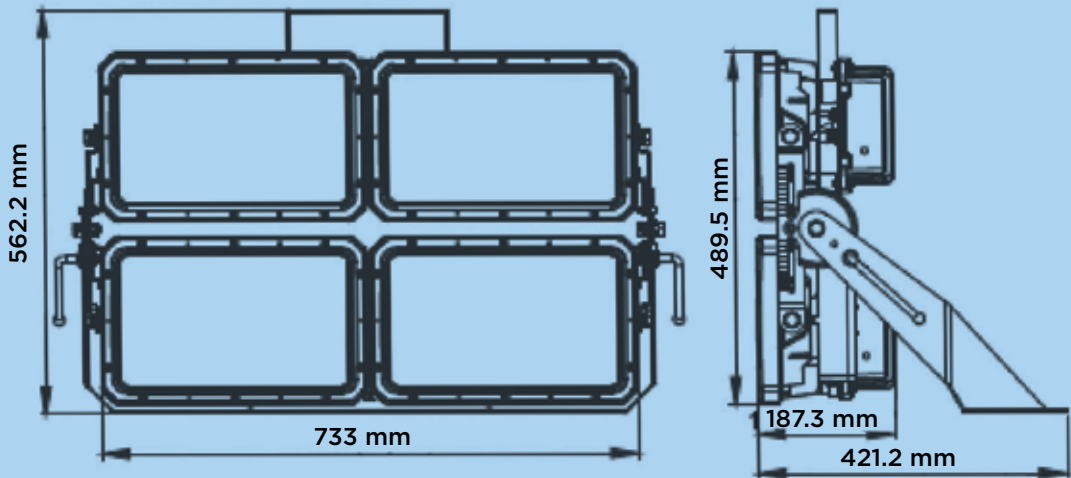
AMAZE PREMIUM 800W – 1000W

”



Features

- Powder coated aluminium die-cast housing
- Modular structure for better heat management
- Independent modular design of the driver box
- Easy heat dissipation helps to extend lifetime
- Convenient for installation & maintenance
- Option of 15° beam angle



Overall Tolerance ± 2mm

General Information

Product Category	LED Floodlight
System Wattage	800/1000W
Luminous Flux	116000 lm ± 10% 145000 lm ± 10%
Luminaire Efficacy	145 lm/W
Correlated Colour Temperature	5700K ± 300K
Colour Rendering Index	>70
Maintenance of Lumen Output	50000 hrs.
Operating Temperature Range	-10°C to 45°C
Beam Angle	NB A2-15° NB A4-30°

Operating and Electrical

Input Voltage	100 to 277V AC
Input Frequency	50/60 Hz
External Surge Protection	20kV

Product and Ordering Data

Product Cat. Ref.	AMPRF 880L WH NB-A2 TG AD AMPRF 1.1KL WH NB-A2 TG AD AMPRF 1.2KL WH NB-A4 TG AD AMPRF 1.5KL WH NB-A4 TG AD
Case Lot	1 no.
Net Weight	32.72 kg. approx.



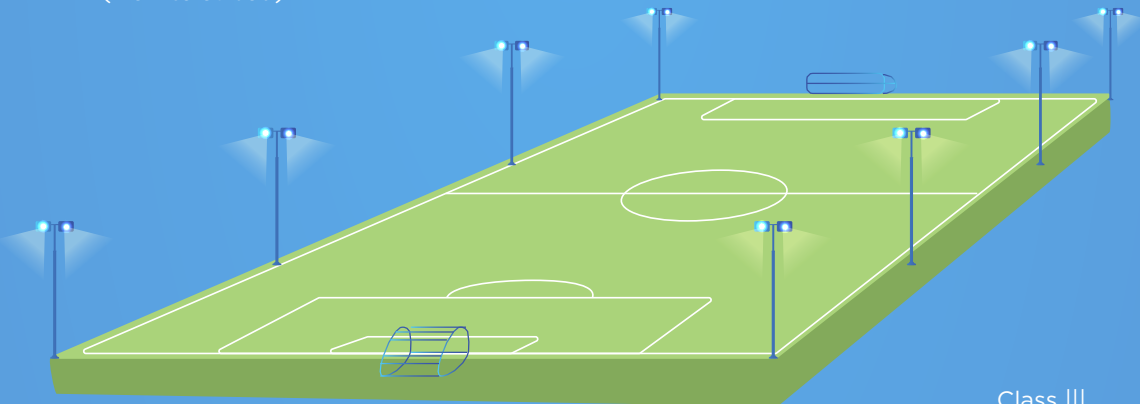


Summary of Lighting Specifications for Non-televised Events

The following table is a summary of the criteria to be considered for non-televised events (example given of a football stadium). It sets out the recommendations for horizontal illuminance, uniformity and the properties of lamps for each level of activity.

Activity Level	Horizontal Illuminance	Uniformity	Lamp Colour Temperature K (Kelvin)	Colour Rendering Index
Class	Eh ave (lux)	U2	Tk	Ra
Class III National Games	750	0.7	>4,000	≥65
Class II Leagues and Clubs	500	0.6	>4,000	≥65
Class II Training and Recreation	200	0.5	>4,000	≥65

Diagram 9h:
Installation Planning
(Non-televised)



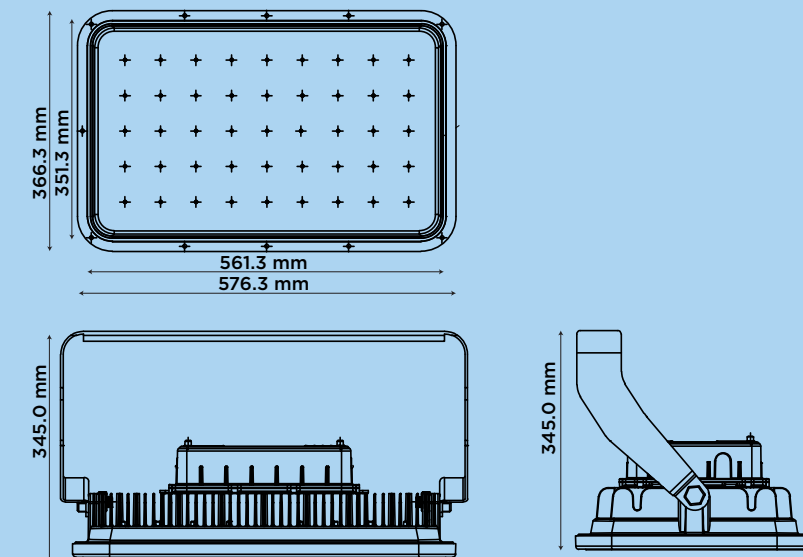
Class III
National Game

“ AMAZE PLUS 400W – 500W ”



Features

- Matt black powder coated pressure die-cast aluminium housing
- Matt black powder coated pressure die-cast aluminium frame with heat-resistant toughened clear glass fixed with SS screw
- High Power LED
- LEDs are provided with secondary lens optics to get optimum optical performance
- The driver used is specially designed to have built-in surge voltage, open/short circuit protections
- External surge protection provided for additional safety
- Luminaire is provided with a MS mounting bracket fixed on pressure die-cast aluminium housing for aiming adjustment



Overall Tolerance $\pm 2\text{mm}$

General Information

Product Category	LED Floodlight
System Wattage	400/500W
Luminous Flux	44000 lm $\pm 10\%$ 55000 lm $\pm 10\%$
Luminaire Efficacy	110 lm/W
Correlated Colour Temperature	5700K $\pm 300\text{K}$ (5665K $\pm 355\text{K}$)
Colour Rendering Index	>70
Maintenance of Lumen Output	50000 hrs.
Operating Temperature Range	-10°C to 45°C
Beam Angle	NB A2-20° NB A3-25°



IP protection
66



IK protection
08

Operating and Electrical

Input Voltage	120 to 277V AC
Input Frequency	50 Hz
System Current in Amp. @240V AC	2.1A
Power Factor	>0.95
THD (@240V)	<10%
Built-in Surge Protection	5kV
External Surge Protection	10kV

Product and Ordering Data

Product Cat. Ref.	AMPLF 480L WH NB-A2 TG AD AMPLF 480L WH NB-A3 TG AD AMPLF 600L WH NB-A2 TG AD AMPLF 600L WH NB-A3 TG AD
Case Lot	1 no.
Net Weight	17 kg. approx.



“ YARDS & PORTS ”

Our robust, high-performance and cost-effective range of anti-glare lighting makes us the preferred choice for lighting ports across the world, no matter the climatic conditions.

When it comes to ports, one of the most crucial elements is that of lighting. Port lighting is vital for the safety and the security of port operations. Good quality, reliable illumination allows successful navigation on the ports and allows people to find their way along the docks, terminals or yards, something that’s particularly important at night and during poor weather conditions.

In a port facility, optimal lighting is essential for the safety of vehicular and foot traffic. The busy work environment of a port requires perfect lighting which can prevent the trip and slip hazards to personnel along with secure handling of goods and equipment. The following are the advantages of Bajaj luminaire & high-mast construction:

- Maintaining sufficient and uniform light levels
- Managing vibration to maximise the fixture life
- Ensuring the longevity of the light engine in critical environment
- Managing thermal properties to maximise light engine life

Lighting recommendation for different areas - as per CIE-129-1998, CIE S 015/E: 2005 & other Indian standards

Sr. No.	Typical Locations	Maintained Average Illuminance level (in lux) (E _{avg})	Uniformity Ratio (E _{min} /E _{avg})
01	HARBOURS & PORTS		
	Container Terminals (Loading & Unloading)	20	0.25
	Vehicle Parking Area	20	0.25
	Vehicle Traffic Area (Internal Roads)	20	0.40
	Jetty Area/ Berth Area/ Dock Area	20/50	0.25/0.40
	Railway Yards	20	0.25
02	RAILWAY YARDS		
	Marshalling Yards	20	0.25/0.40
	Vehicle Parking Area	20	0.25
	Vehicle Traffic Area (Internal Roads)	20	0.40
	Loading & Unloading Area	20/50	0.25/0.40
03	AIRPORTS		
	Apron Area	20	0.25
	Vehicle Parking Area	20	0.25
	Vehicle Traffic Area (Internal Roads)	20	0.40

“ CRITICAL LIGHTING FACTORS FOR PORT OPERATIONS ”

GLARE CONTROL



When illuminating large areas, such as container yards or airport aprons, individual luminaires need to produce a great deal of light, which can often cause glare and excessive contrast when looking towards them. Glare can be uncomfortable and distracting to workers, greatly hindering their productivity and potentially compromising their safety.

Solution:

Precise optical system design, combined with proper lighting scheme, we provide an environment with minimal glare.

VIBRATION TOLERANCE AND HIGH WIND LOADING

The lighting used in ports and logistics facilities are often hung on high mast poles or tall cranes exceeding 30 meters. Subject to extreme winds and continuous vibration, amplified by heavy machinery on the ground, the luminaires must be able to endure these unstable conditions.

Solution:

Bajaj luminaire & high-mast construction provide light fixtures that are vibration resistant and have low wind loading.



ENSURING THE LONGEVITY OF THE LIGHT ENGINE IN A CRITICAL ENVIRONMENT



A great service doesn't stop with installation. Critical areas like ports, border lighting are very difficult to maintain.

Solution:

Sturdy and high product quality ensures maintenance-free and long-life products. With our in-house R&D facilities, we introduce the most advanced and technologically competent products as per the market requirements. Our production facilities ensure a complete indigenous product with the best-in-class components and engineering. It also ensures deliverables for successful and timely completion of projects.

PROFESSIONAL MAINTENANCE TEAM

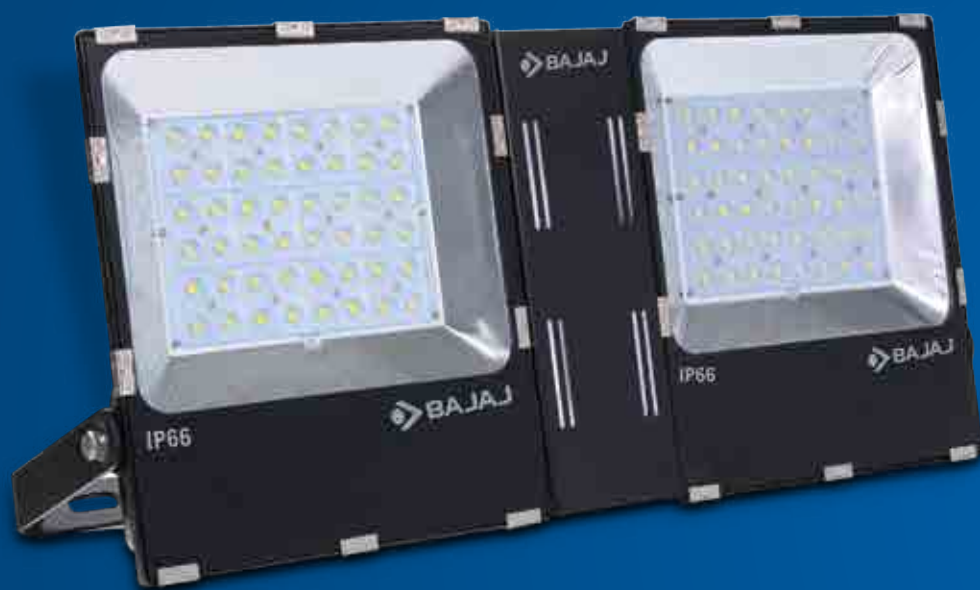
Maintenance of high-mast needs special technical competency coupled with experience of handling complex situations.

Solution:

Our fully qualified engineers offer a variety of maintenance packages to suit every requirement. Working at all heights, we will inspect and report on all aspects of your lighting system - including testing your electrical systems and cabling to certify compliance to all standards. We can also repair and replace key components and develop a tailored maintenance programme to suit your specific project.

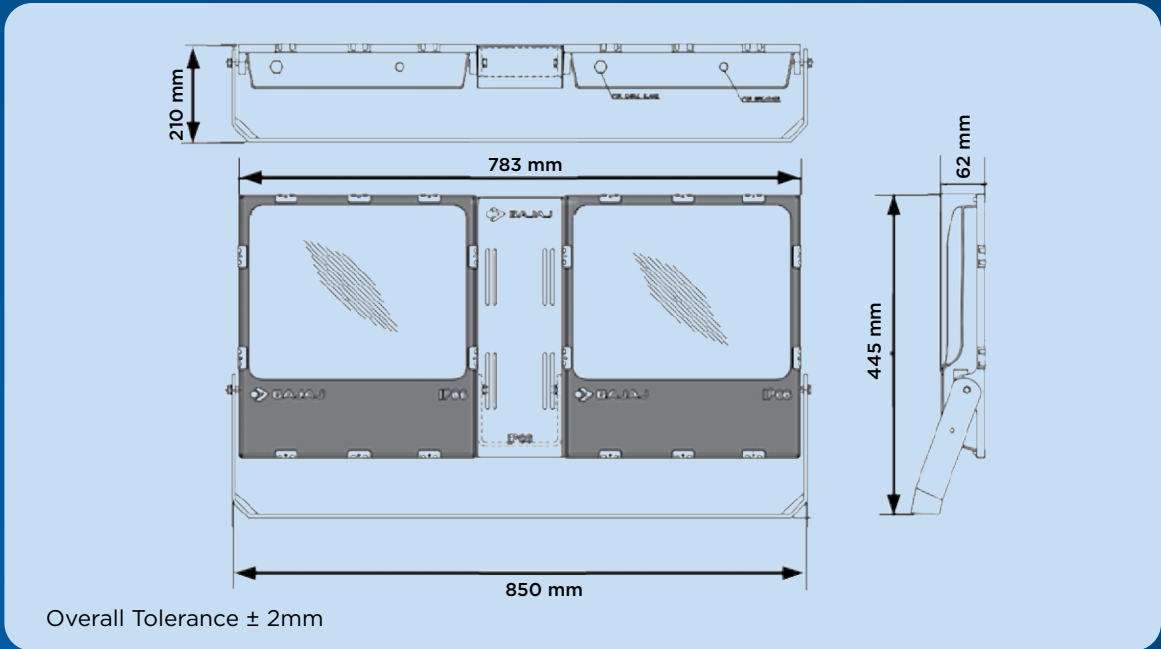


“ AMAZE PRO 400W ”



Features

- Pressure die-cast aluminium LED housing designed to act as heat sink for efficient dissipation of heat
- Electrochemically brightened and anodised aluminium reflector with modular lens
- Heat resistant toughened glass provided with gasket and SS clips to ensure ingress protection of IP 66 rating
- The constant current driver used is specially designed to have built-in surge voltage, open/short circuit protections
- Luminaire is provided with a MS mounting bracket fixed on pressure die-cast aluminium housing for aiming adjustment



General Information

Product Category	LED Floodlight
System Wattage	400W
Luminous Flux	40000 lm
Lumen Efficacy	100 lm/W
Correlated Colour Temperature	5700K ± 300K
Colour Rendering Index	>70
Maintenance of Lumen Output	50000 hrs.
Operating Temperature Range	-10°C to 45°C
Beam Angle	60° ± 10%



IP protection
66



IK protection
07

Operating and Electrical

Input Voltage	120 to 270V AC
Input Frequency	50 Hz
System Current in Amp. @240V AC	2.0A
Power Factor	>0.95
THD (@240V)	<10%
Built-in Surge Protection	5kV
External Surge Protection	10kV

Product and Ordering Data

Product Cat. Ref.	BJFL 400W LED E
Case Lot	2 nos.
Net Weight	8 kg. approx.

“ GENERAL AREA LIGHTING ”



Facade Lighting



Area Lighting



Parking Area



Playground



Warehouse



Townships



Lighting recommendation for different areas - as per CIE - 129- 1998, CIE S 015/E: 2005 & other Indian standards

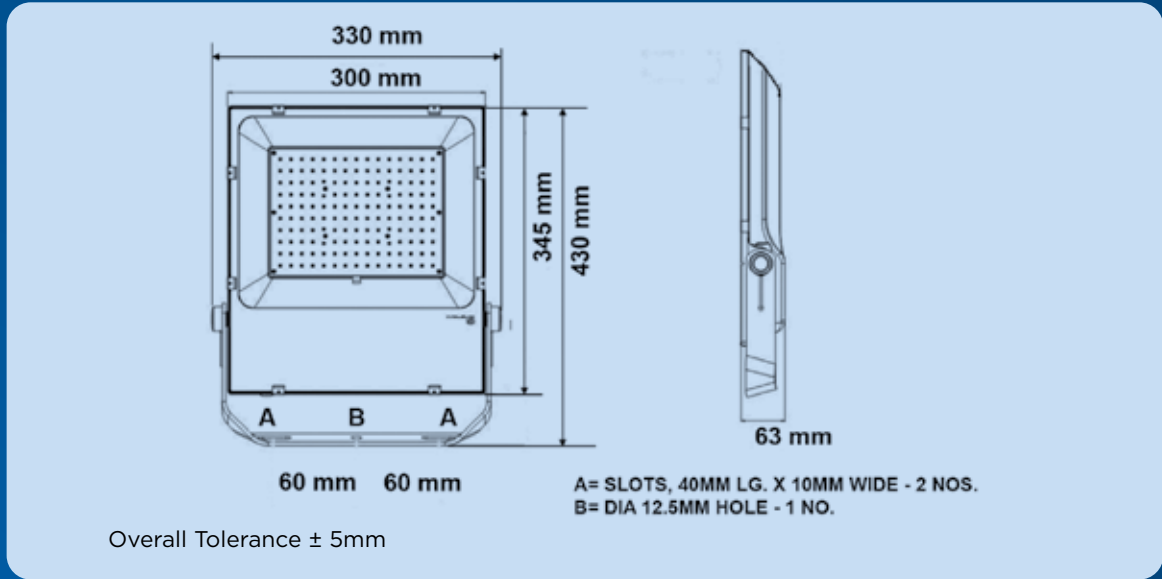
Sr. No.	Typical Locations	Maintained Average Illuminance level (in lux) (E_{avg})	Uniformity Ratio (E_{min}/E_{avg})
1	INDUSTRIAL YARDS & STORAGE AREAS		
	Container Terminals (Short Term Handling)	20	0.25
	Container Terminals (Continuous Handling)	50	0.40
	Vehicle Parking Area	20	0.25
	Vehicle Traffic Area (Internal Roads)	20	0.40
2	PARKING LOTS		
	Light Traffic Parking Lots	5	0.25
	Medium Traffic Parking Lots	10	0.25
	Heavy Traffic Parking Lots	20	0.25
3	PETROCHEMICAL INDUSTRIES & OTHER HAZARDOUS INDUSTRIES		
	Tank Farm Area	20	0.25
	Valve Area & Manifold	50-60	0.40
	Pump House & TLF Platform	100	0.40
	Vehicle Parking Area	20	0.25
	Vehicle Traffic Area (Internal Roads)	20	0.40
4	POWER, ELECTRICITY, GAS & HEAT PLANTS		
	Coal Handling Area	20	0.25
	Switch Yard Area	20	0.25
	Switch Yard Area (Equipment Level)	50	0.25/0.40
	Vehicle Parking Area	20	0.25
	Vehicle Traffic Area (Internal Roads)	20	0.40
	Railway Yards	100	0.25

“ AMAZE 120W – 150W ”



Features

- Pressure die-cast aluminium LED housing designed to act as heat sink for efficient dissipation of heat
- Electrochemically brightened and anodised aluminium reflector with modular lens
- Heat-resistant toughened glass provided with gasket and SS clips to ensure ingress protection of IP66
- Luminaires provided with a mounting bracket for aiming adjustment
- The driver used is specially designed to have built-in 5kV surge voltage, open/short circuit protections
- External surge 10kV protection provided for additional safety
- Finish: Powder coated



General Information

Product Category	LED Floodlight
System Wattage	120/150W
Luminous Flux	12000 lm \pm 10% 15000 lm \pm 10%
Luminaire Efficacy	100 lm/W
Correlated Colour Temperature	5700K \pm 300K
Colour Rendering Index	>70
Maintenance of Lumen Output	50000 hrs.
Operating Temperature Range	-5°C to +45°C
Beam Angle	60° \pm 10%



IP protection
66



IK protection
07

Operating and Electrical

Input Voltage	120 to 270V AC
Input Frequency	50 Hz
System Current in Amp. @240V AC	0.625A
Power Factor	>0.95
THD (@240V)	<15%
Built-in Surge Protection	4kV
External Surge Protection	10kV

Product data and Ordering data

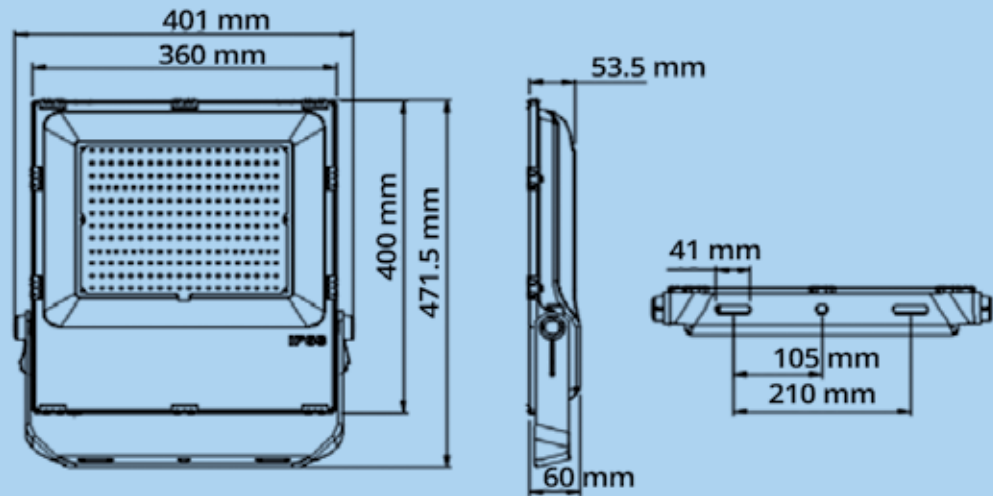
Product Cat. Ref.	BJFL 120W LED I BJFL 150W LED I
Case Lot	1 no.
Net Weight	6.5 kg. approx.

“ AMAZE 180W – 200W ”



Features

- Matt black polyester powder coated pressure die-cast aluminium housing
- High Power LED
- LEDs are provided with secondary lens optics to get optimum optical performance
- The driver used is specially designed to have built-in surge voltage, open/short circuit protections
- External surge protection provided for additional safety
- Luminaire is provided with a MS mounting bracket fixed on pressure die-cast aluminium housing for aiming adjustment



Overall Tolerance ± 2mm

General Information

Product Category	LED Floodlight
System Wattage	180/200W
Luminous Flux	18000 lm ± 10% 26000 lm ± 10%
Luminaire Efficacy	100/130 lm/W
Correlated Colour Temperature	5700K ± 300K
Colour Rendering Index	>70
Maintenance of Lumen Output	50000 hrs.
Operating Temperature Range	-5°C to +50°C
Beam Angle	60° ± 10%



IP protection
66



IK protection
07

Operating and Electrical

Input Voltage	120 to 275V AC
Input Frequency	50 Hz
System Current in Amp. @240V AC	0.890A
Power Factor	>0.95
THD (@240V)	<10%
Built-in Surge Protection	5kV
External Surge Protection	10kV

Product and Ordering Data

Product Cat. Ref.	BJFL 180W LED I BJFL 200W LED I
Case Lot	1 no.
Net Weight	6.0 kg. approx.

“

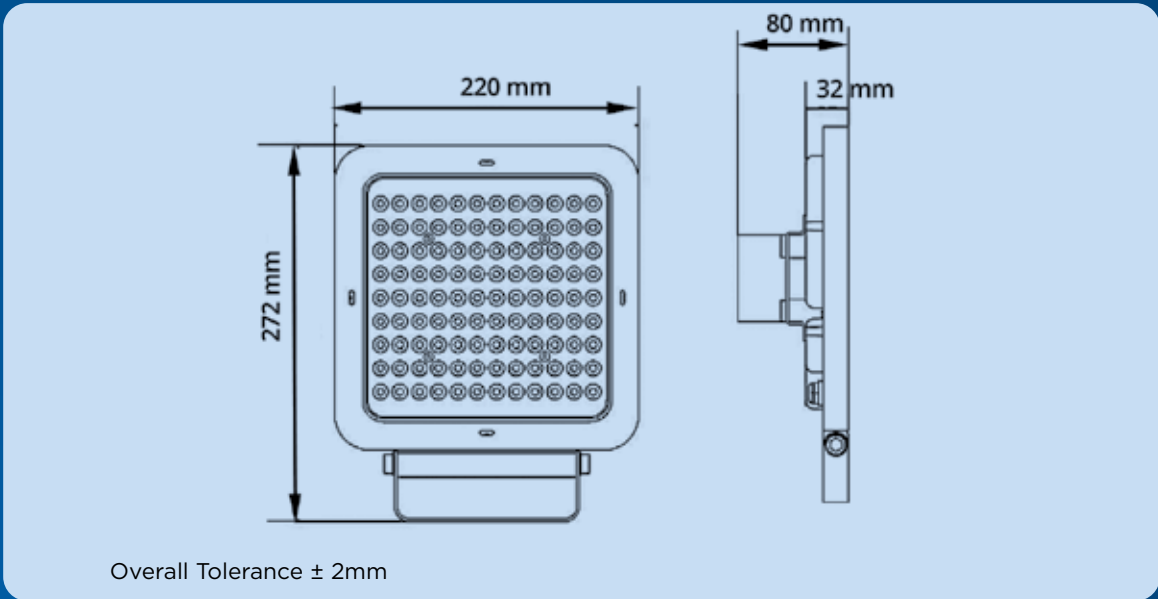
OUR EXTENDED RANGE
GLEAM LED FLOODLIGHT 100W

”



Features

- Powder coated aluminium die-cast housing
- Modular structure for a better heat management
- Independent modular design of the driver box
- Easy heat dissipation helps to extend lifetime
- Convenient for installation & maintenance



General Information

Product Category	LED Floodlight
System Wattage	100W
Luminous Flux	12000 lm
Luminaire Efficacy	120 lm/W
Correlated Colour Temperature	5700K \pm 300K
Colour Rendering Index	>70
Maintenance of Lumen Output	50000 hrs.
Operating Temperature Range	-10°C to 45°C
Beam Angle	NB A5-60°



IP protection
65



IK protection
08

Operating and Electrical

Input Voltage	120 to 275V AC
Input Frequency	50/60 Hz
System Current in Amp. @240V AC	0.410A
Power Factor	>0.95
THD (@240V)	<10%
Built-in Surge Protection	4kV
External Surge Protection	10kV

Product and Ordering Data

Product Cat. Ref.	GLEAMF120WHSYPC
Case Lot	1 no.
Net Weight	2.27 kg. approx.

“

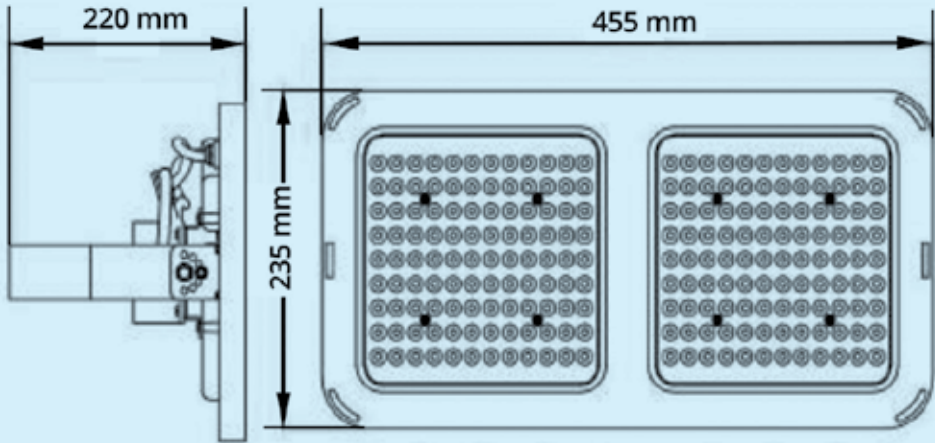
OUR EXTENDED RANGE
GLEAM LED FLOODLIGHT 200W

”



Features

- Powder coated aluminium die-cast housing
- Modular structure for a better heat management
- Independent modular design of the driver box
- Easy heat dissipation helps to extend lifetime
- Convenient for installation & maintenance



Overall Tolerance ± 2mm

General Information

Product Category	LED Floodlight
System Wattage	200W
Luminous Flux	24000 lm
Luminaire Efficacy	120 lm/W
Correlated Colour Temperature	5700K ± 300K
Colour Rendering Index	>70
Maintenance of Lumen Output	50000 hrs.
Operating Temperature Range	-10°C to 45°C
Beam Angle	NB A5-60°



IP protection
65



IK protection
08

Operating and Electrical

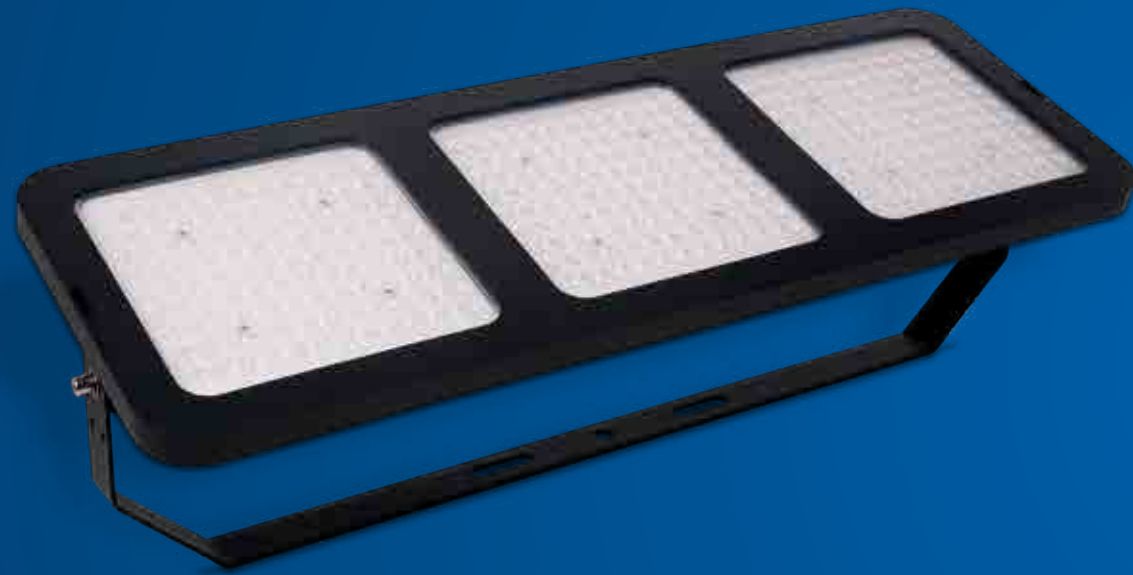
Input Voltage	120 to 275V AC
Input Frequency	50/60 Hz
System Current in Amp. @240V AC	0.824A
Power Factor	>0.95
THD (@240V)	<10%
Built-in Surge Protection	4kV
External Surge Protection	10kV

Product and Ordering Data

Product Cat. Ref.	GLEAMF240WHSYPC
Case Lot	1 no.
Net Weight	4.4 kg. approx.

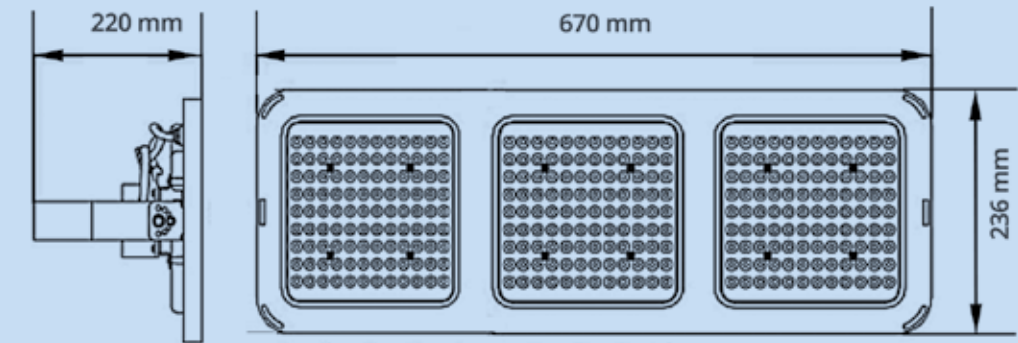


OUR EXTENDED RANGE
GLEAM LED FLOODLIGHT
300W



Features

- Powder coated aluminium die-cast housing
- Modular structure for a better heat management
- Independent modular design of the driver box
- Easy heat dissipation helps to extend lifetime
- Convenient for installation & maintenance



Overall Tolerance ± 2 mm

General Information

Product Category	LED Floodlight
System Wattage	300W
Luminous Flux	36000 lm
Luminaire Efficacy	120 lm/W
Correlated Colour Temperature	5700K \pm 300K
Colour Rendering Index	>70
Maintenance of Lumen Output	50000 hrs.
Operating Temperature Range	-10°C to 45°C
Beam Angle	NB A5-60°



IP protection
65



IK protection
08

Operating and Electrical

Input Voltage	120 to 275V AC
Input Frequency	50/60 Hz
System Current in Amp. @240V AC	1.234A
Power Factor	>0.95
THD (@240V)	<10%
Built-in Surge Protection	4kV
External Surge Protection	10kV

Product and Ordering Data

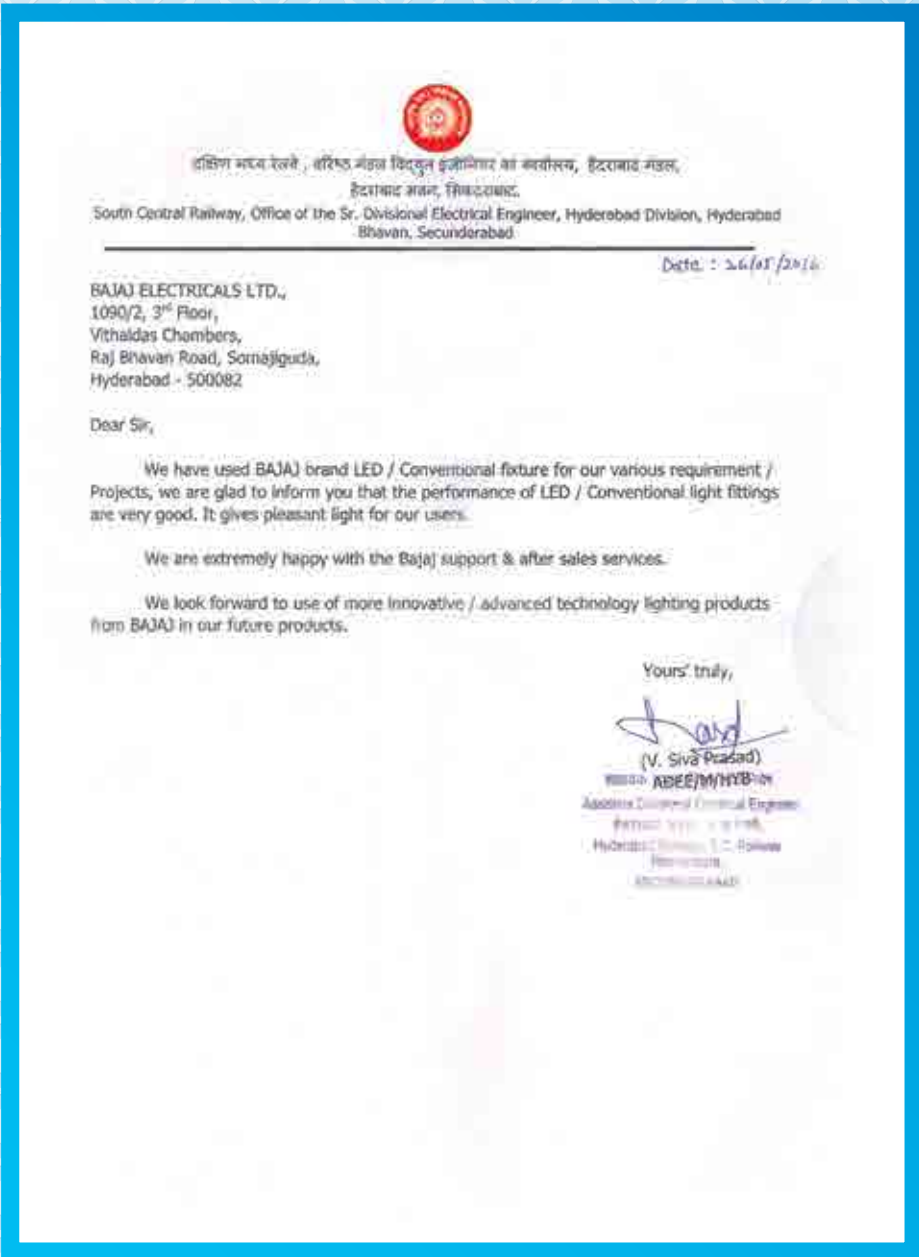
Product Cat. Ref.	GLEAMF360WHSYPC
Case Lot	1 no.
Net Weight	6.6 kg. approx.

► TECHNICAL SPECIFICATION

Product	Product Name	Category Reference	System Wattage	IP	IK	Efficacy
	AMAZE PREMIUM	AMPRF 880L WH NB-A2 TG AD AMPRF 1.1KL WH NB-A2 TG AD AMPRF 1.2KL WH NB-A4 TG AD AMPRF 1.5KL WH NB-A4 TG AD	800W 1000W	IP66	IK08	145 lm/W
	AMAZE PLUS	AMPLF 480L WH NB-A2 TG AD AMPLF 480L WH NB-A3 TG AD AMPLF 600L WH NB-A2 TG AD AMPLF 600L WH NB-A3 TG AD	400W 500W	IP66	IK08	110 lm/W
	AMAZE PRO	BJFL 400W LED E	400W	IP66	IK07	100 lm/W
	AMAZE	BJFL 120W LED I BJFL 150W LED I	120W 150W	IP66	IK07	100 lm/W
	AMAZE	BJFL 180W LED I BJFL 200W LED I	180W 200W	IK07	IP66	100 lm/W 130 lm/W
	GLEAM LED FLOODLIGHT	GLEAMF 120WHSYPC	100W	IP65	IK08	120 lm/W
	GLEAM LED FLOODLIGHT	GLEAMF 240WHSYPC	200W	IP65	IK08	120 lm/W
	GLEAM LED FLOODLIGHT	GLEAMF 360WHSYPC	300W	IP65	IK08	120 lm/W



LETTER OF APPRECIATION



“LETTER OF APPRECIATION”

TATA - ALDESA (JV)

To Whom it May Concern

This is to certify that M.s Dynamic Solutions

Purmandal Mohr Bari Brahmana Jammu -180016

Dynamic Solutions: DELHI OFFICE: REGAL THEATRE, CONNAUGHT CIRCLE -110001

Has Satisfactorily Executed and completed the work for supply & installation testing and commissioning of Electrical Panels /lights/HI mast at:

TATA-ALDESA (JV) Maitha near Maitha Railway Station Kangur Debar

TATA-ALDESA (JV) C/441 Goetanjali Bhawan Near Panki Police Station Panki

Kangur-UP PIN:- 208020

Sr No.	Purchase order No.	Dated	Value
1	SBU-RLV/TATA-ALDESA JV/VO-ALJN/DFCCIL-LOT-101/126	10-08-2015	1068000.00
2	SBU-RLV/TATA-ALDESA JV/VO-ALJN/DFCCIL-LOT-101/126	10-08-2015	2196023.00
			3264023.00 ₹

The work was completed in time and lights are working satisfactorily. We are satisfied with lights and Performance of Bajaj Led Flood lights of 160 watt.

Thanks & Regards,

Ganraj Bhardwaj

Ganraj Bhardwaj

Dy. Manager (SCM)

DFCCIL – Slice 101,

Mobile: 91 7660411227

JV Office – "Withana Tower-1" 1-7-80 (w.k.) Panchsheel Road, Secunderabad - 500 003, Telangana India

Site Office: "SARASWATI PALACE" Ferozabad Road, N.H.-2 Tundla - 283 204 Distt. Ferozabad Uttar Pradesh India

CIN: UAS203AF1179PLCOVY811

“LETTER OF APPRECIATION”



भारतीय विमानपत्तन प्राधिकरण
AIRPORTS AUTHORITY OF INDIA

Certificate of Appreciation

To,

Bajaj Electricals Ltd

8/1, Lalbazar Street,

3rd Floor, Bikaner Building,

Kolkata-700001

Date: 31.05.2016

Kind Attention: Mr. Chirantan Kumar & Mr. Arijit Sen

This is to certify that M/s. Bajaj Electricals Ltd has been excellent in their timely response to us.

The package includes Bajaj Luminaires and its accessories.

Bajaj Electricals Luminaires division has Technical, Reliable and Performing team providing lighting solutions with expertise.

We would like to thank M/S: Bajaj Electricals Ltd luminaires division for their Hard Work, Dedication and Support extended to us for our various projects.

We expect similar cooperation from them in future also.

Thanking you,

Yours faithfully,

U.K. RAKSHIT

(उत्तम कुमार रक्षित / U.K. RAKSHIT)

स. प्रबन्धक (आमि.-वि.) / Senior Manager (B-E),

आ. वि. प्र. / AAJ

ने. सु. म. अ. हवाई अड्डा, NSCH Airport

कोलकाता-700052 / Kolkata-700052.

सूचक :-

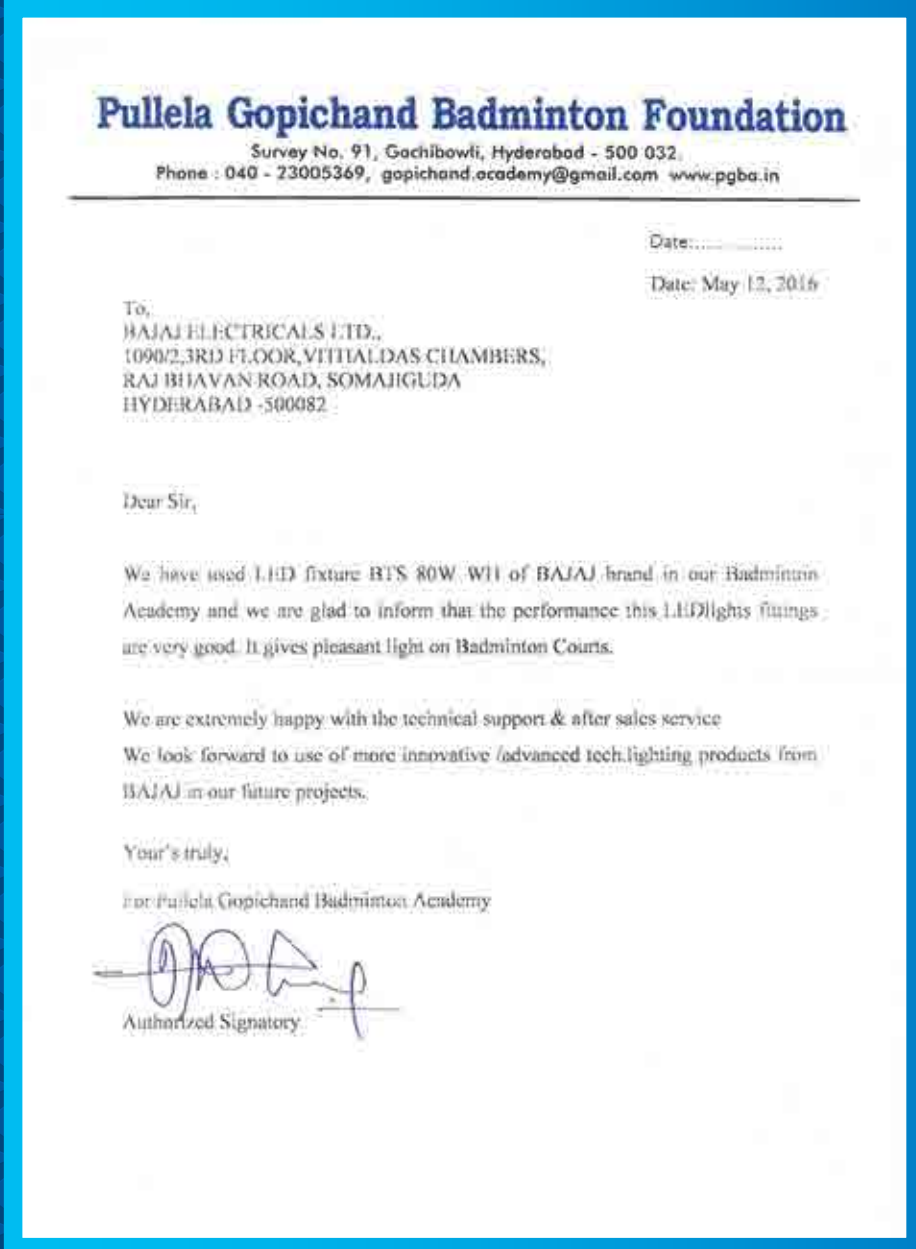
भारतीय विमानपत्तन प्राधिकरण, कोलकाता-52

आमि. वि. प्र. चारुता बाबा अंतराष्ट्रीय हवाई अड्डा, कोलकाता-52

फ़ोन नं. 033-2211-9800

फ़ैक्स नं. 033-2211-9800

“ LETTER OF APPRECIATION ”



“ OUR PRESENCE ”

